

# CHARMILL

## RESIDENTIAL



## Westbourne Terrace Road, Little Venice W2

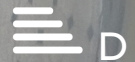
£577

A charming one-bedroom apartment arranged on the first floor of a stunning period conversion on Westbourne Terrace Road. The apartment comprises a spacious reception/dining room with wooden flooring, separate fully fitted eat in kitchen which leads to a private balcony with views over Regents Canal, double bedroom with ample storage and a bathroom suite. The apartment is a short stroll away and Paddington station is also within easy reach, offering Circle, District, Bakerloo and Hammersmith & City lines together with National Rail services and the Heathrow Express providing access to Heathrow Airport in 15 minutes. Furthermore, the Elizabeth line connecting you to Canary Wharf in just 18 minutes.

- One bedroom
- First floor
- Balcony
- Bright
- Furnished
- Period Conversion

### Viewing

Please contact us on 020 7046 6276 if you wish to arrange a viewing appointment for this property or require further information.



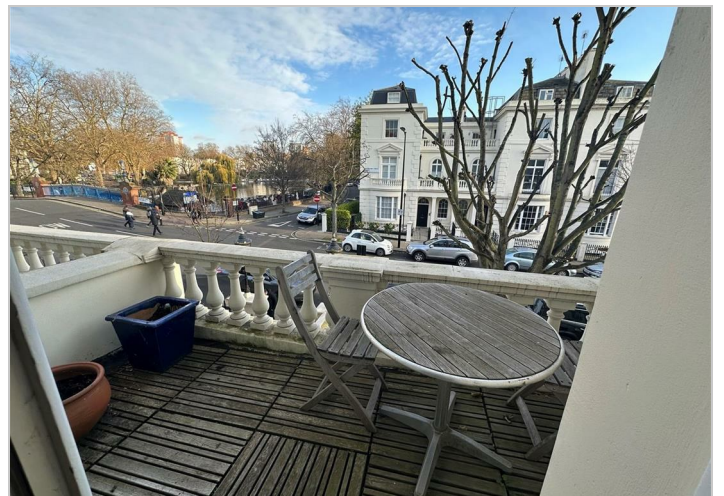
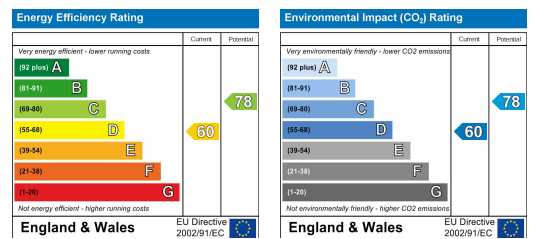
## Floor Plan



## Area Map



## Energy Efficiency Graph



These particulars, whilst believed to be accurate are set out as a general outline only for guidance and do not constitute any part of an offer or contract. Intending purchasers should not rely on them as statements of representation of fact, but must satisfy themselves by inspection or otherwise as to their accuracy. No person in this firm's employment has the authority to make or give any representation or warranty in respect of the property.

020 7046 6276 • [lettings@charmillresidential.co.uk](mailto:lettings@charmillresidential.co.uk) • 51 Maida Vale, Little Venice, London W9 1SD  
[charmillresidential.co.uk](http://charmillresidential.co.uk)